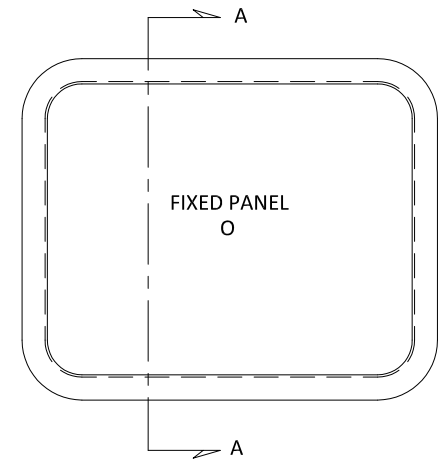
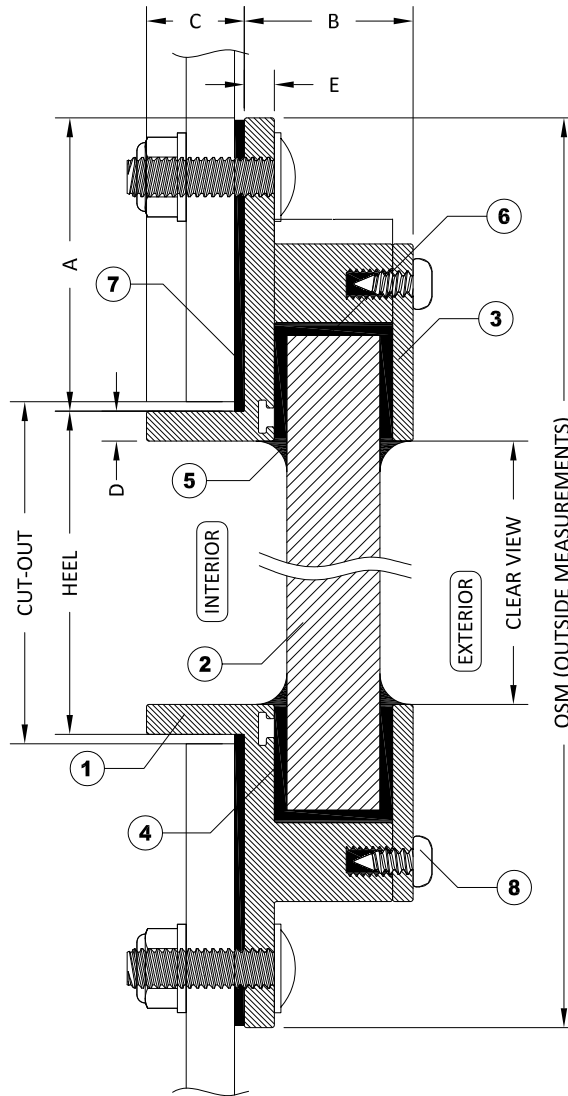


| ITEMS | | | |
|-------|------------------|---------------------------------|--------------|
| ID | DESCRIPTION | MATERIAL | PART NUMBER |
| 1 | MOUNTING FRAME | 6063 ALUMINUM | MT-EX28222 |
| 2 | GLAZING | GLASS 12mm (1/2") & 15mm (5/8") | |
| 3 | 600 STOP | 6063 ALUMINUM | MT - EX28226 |
| 4 | BUTYL TAPE | | ADTA1/8X3/8B |
| 5 | SEALANT | SILICONE | |
| 6 | BACKFILL | URETHANE | |
| 7 | BEDDING COMPOUND | CUSTOMER TO SUPPLY | |
| 8 | STOP SCREW | | |

| STANDARD DIMENSIONS | | |
|---------------------|----------------------|-----------------|
| ID | DESCRIPTION | DIMENSION |
| A | FLANGE COVERAGE | 47mm (1 13/16") |
| B | EXTERIOR PROTRUSION | 27mm (1 1/16") |
| C | INTERIOR PROTRUSION | 16mm (5/8") |
| D | SPIGOT TO CLEAR VIEW | 5mm (3/16") |
| E | FLANGE THICKNESS | 5mm (3/16") |



SECTION A-A WITH BOLT-ON INSTALLATION

NOTES:

- GENERAL HEEL TOLERANCE +0/-1/4" OVERALL
- AVAILABLE WITH 4"(102mm) RADIUS OR MITERED CORNERS
- STANDARD MOUNTING HOLES ARE 1/4" WITH #8 COUNTERSUNK ON 6" NOMINAL CENTERS

DRAWING NUMBER

600F

DIAMOND SEA GLAZE MANUFACTURING LTD.
26995 GLOUCESTER WAY, LANGLEY B.C.
CANADA V4W 3Y3
TOLL FREE: 1-800-770-0455
PHONE: 604-607-0091
FAX: 604-607-0092

SCALE

NTS

BY

LD



Diamond Sea Glaze

Crystal Clear. Rock Solid.

ITEM NAME

600F

REVISION

0

ITEM DESCRIPTION

HEAVY DUTY WINDOWS

ALL DRAWINGS AND ANY ASSOCIATED INFORMATION HEREON CONTAIN PROPRIETARY AND/OR CONFIDENTIAL INFORMATION, AND SHALL NOT BE REPRODUCED, DISCLOSED OR SUBMITTED TO ANY THIRD PARTY WITHOUT PRIOR CONSENT FROM DIAMOND SEA GLAZE MANUFACTURING LTD.