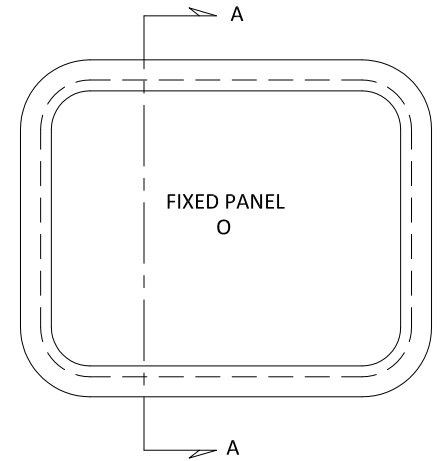
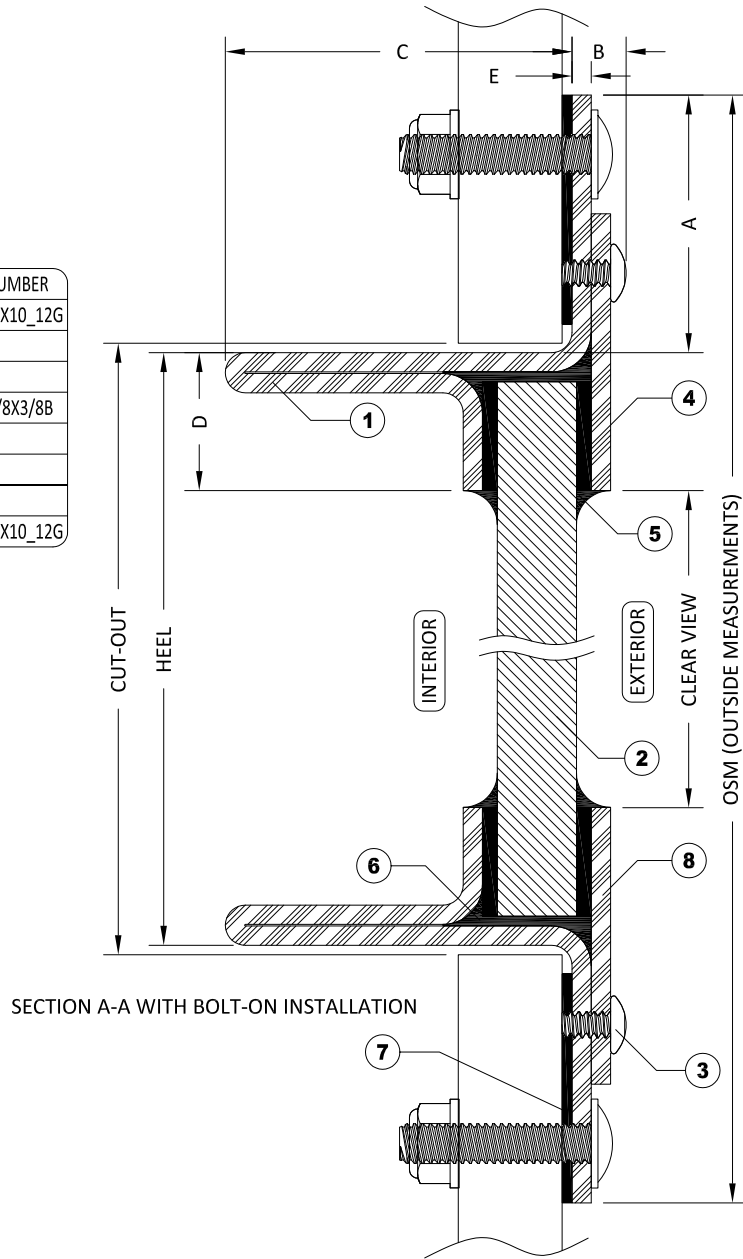


ITEMS			
ID	DESCRIPTION	MATERIAL	PART NUMBER
1	MOUNTING FRAME	STEEL or STAINLESS STEEL	MT - SHSX10_12G
2	GLAZING	GLASS 6mm (1/4") TO 25mm (1")	
3	320 STOP SCREWS		
4	BUTYL TAPE		ADTA1/8X3/8B
5	SEALANT	SILICONE	
6	BACKFILL	URETHANE	
7	BEDDING COMPOUND	CUSTOMER TO SUPPLY	
8	320 STOP	STEEL	MT - SHSX10_12G

STANDARD DIMENSIONS		
ID	DESCRIPTION	DIMENSION
A	FLANGE COVERAGE	41mm (1 5/8")
B	EXTERIOR PROTRUSION	9mm (3/8")
C	INTERIOR PROTRUSION	56mm (2 3/16")
D	SPIGOT TO CLEAR VIEW	22mm (7/8")
E	FLANGE THICKNESS	3mm (1/8")



NOTES:

- GENERAL HEEL TOLERANCE +0/-1/4" OVERALL
- AVAILABLE WITH 4" (102mm) OR MITERED CORNERS
- STANDARD MOUNTING HOLES ARE 1/4" ON 6" NOMINAL CENTERS

DRAWING NUMBER

320F

DIAMOND SEA GLAZE MANUFACTURING LTD.
26995 GLOUCESTER WAY, LANGLEY B.C.
CANADA V4W 3Y3
TOLL FREE: 1-800-770-0455
PHONE: 604-607-0091
FAX: 604-607-0092

SCALE

NTS

BY

LD



Diamond Sea Glaze

Crystal Clear. Rock Solid.

ITEM NAME

320F

REVISION

0

ITEM DESCRIPTION

COMMERCIAL DUTY WINDOWS

ALL DRAWINGS AND ANY ASSOCIATED INFORMATION HEREON CONTAIN PROPRIETARY AND/OR CONFIDENTIAL INFORMATION, AND SHALL NOT BE REPRODUCED, DISCLOSED OR SUBMITTED TO ANY THIRD PARTY WITHOUT PRIOR CONSENT FROM DIAMOND SEA GLAZE MANUFACTURING LTD.