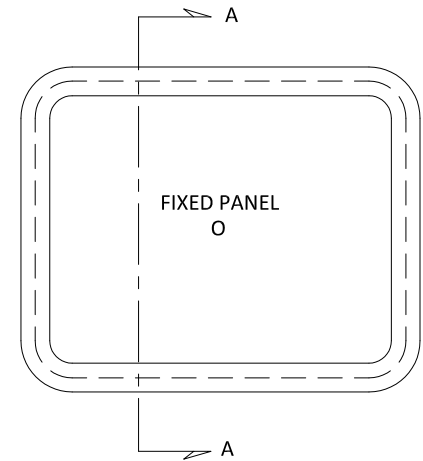
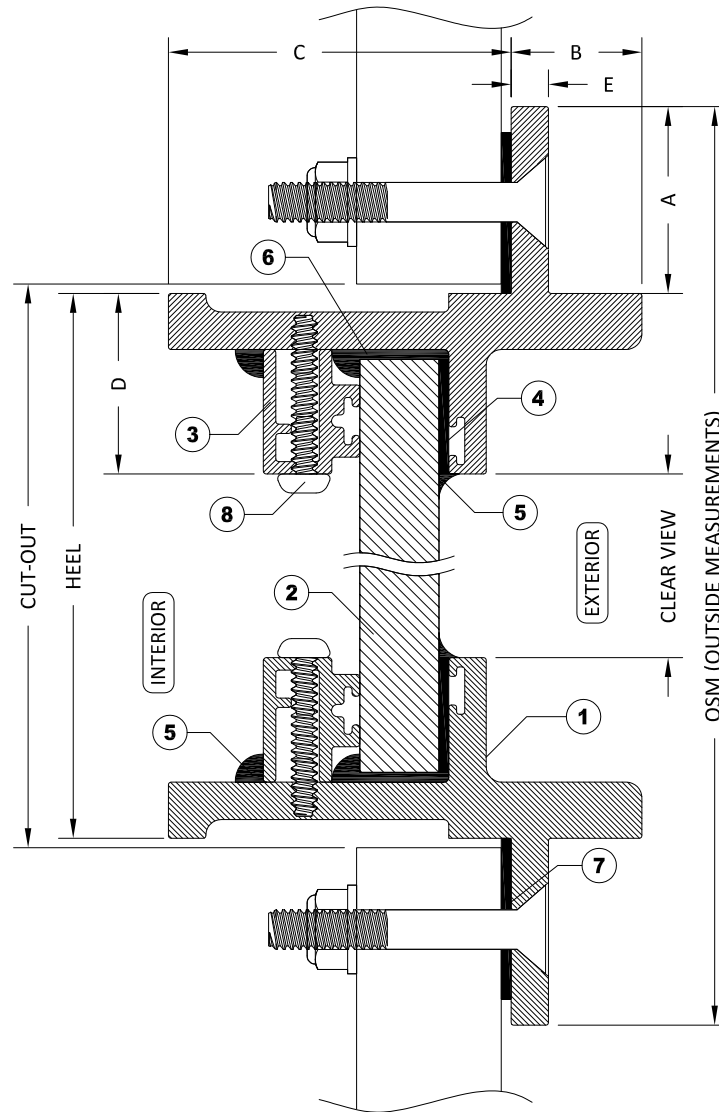


ITEMS			
ID	DESCRIPTION	MATERIAL	PART NUMBER
1	MOUNTING FRAME	6063 ALUMINUM	MT-EX780231
2	GLAZING	GLASS 6mm (1/4") TO 25mm (1")	
3	200 STOP	6063 ALUMINUM	MT - EX780679
4	BUTYL TAPE		ADTA1/8X3/8B
5	SEALANT	SILICONE	
6	BACKFILL	URETHANE	
7	BEDDING COMPOUND	CUSTOMER TO SUPPLY	
8	STOP SCREW	S/S	

STANDARD DIMENSIONS		
ID	DESCRIPTION	DIMENSION
A	FLANGE COVERAGE	30mm (1 3/16")
B	EXTERIOR PROTRUSION	21mm (13/16")
C	INTERIOR PROTRUSION	55mm (2 3/16")
D	SPIGOT TO CLEAR VIEW	29mm (1 1/8")
E	FLANGE THICKNESS	6mm (1/4")



SECTION A-A WITH BOLT-ON INSTALLATION

NOTES:

- GENERAL HEEL TOLERANCE +0/-1/4" OVERALL
- AVAILABLE WITH 3" (76MM) RADIUS OR MITERED CORNERS
- STANDARD MOUNTING HOLES ARE 1/4" WITH #18 COUNTERSUNK ON 6" NOMINAL CENTERS

DRAWING NUMBER

STANDARD

DIAMOND SEA GLAZE MANUFACTURING LTD.
26995 GLOUCESTER WAY, LANGLEY B.C.
CANADA V4W 3Y3
TOLL FREE: 1-800-770-0455
PHONE: 604-607-0091
FAX: 604-607-0092

SCALE

NTS

BY

LD



Diamond Sea Glaze

Crystal Clear. Rock Solid.

ITEM NAME

200-F

REVISION

0

ITEM DESCRIPTION

HEAVY DUTY WINDOWS

ALL DRAWINGS AND ANY ASSOCIATED INFORMATION HEREON CONTAIN PROPRIETARY AND/OR CONFIDENTIAL INFORMATION, AND SHALL NOT BE REPRODUCED, DISCLOSED OR SUBMITTED TO ANY THIRD PARTY WITHOUT PRIOR CONSENT FROM DIAMOND SEA GLAZE MANUFACTURING LTD.