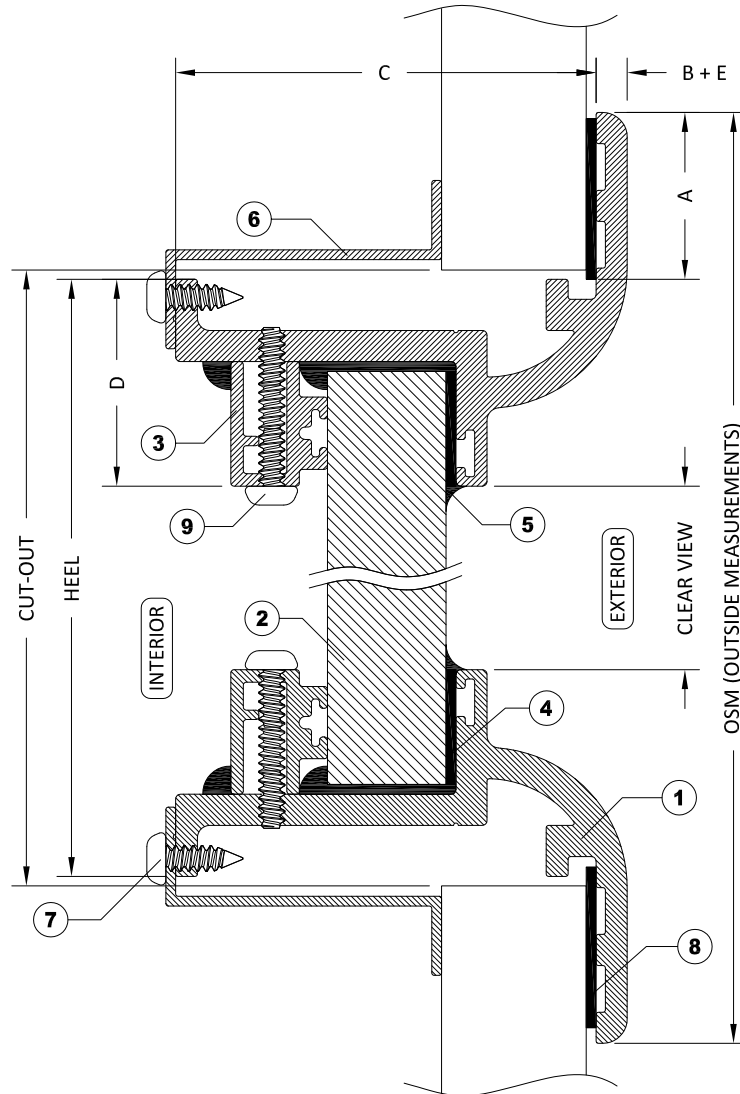


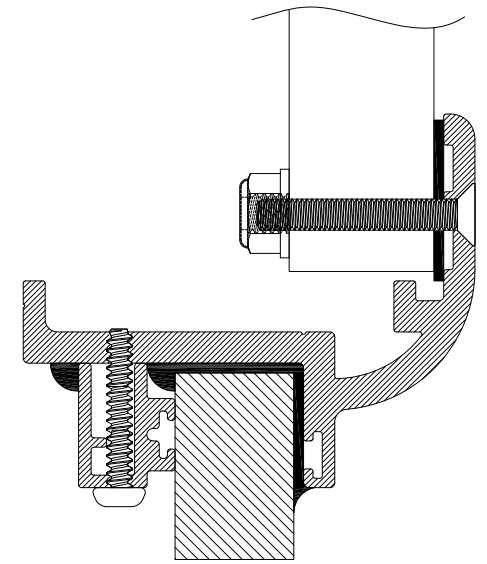
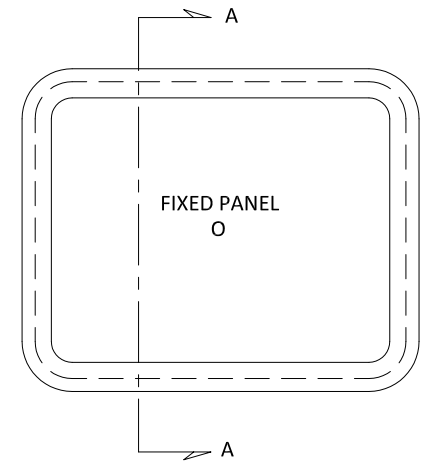
ITEMS			
ID	DESCRIPTION	MATERIAL	PART NUMBER
1	MOUNTING FRAME	6063 ALUMINUM	MT-EX22368
2	GLAZING	GLASS 6mm (1/4") TO 19mm (3/4")	
3	150 STOP	6063 ALUMINUM	MT - EX780679
4	BUTYL TAPE	POLYISOBUTYLENE	ADTA1/8X3/8B
5	SEALANT	SILICONE	
6	TRIM RING	6063 ALUMINUM	
7	TRIM SCREWS		
8	BEDDING COMPOUND	CUSTOMER TO SUPPLY	
9	STOP SCREW		

STANDARD DIMENSIONS

ID	DESCRIPTION	DIMENSION
A	FLANGE COVERAGE	27mm (1 1/16")
B	EXTERIOR PROTRUSION	5mm (3/16")
C	INTERIOR PROTRUSION	67mm (2 11/16")
D	SPIGOT TO CLEAR VIEW	33mm (1 5/16")
E	FLANGE THICKNESS	5mm (3/16")



SECTION A-A WITH CLAMP IN INSTALLATION



OPTIONAL BOLT-ON INSTALLATION

NOTES:

- GENERAL HEEL TOLERANCE +0/-1/4" OVERALL
- AVAILABLE WITH 4" (102mm) RADIUS OR MITERED CORNERS
- STANDARD MOUNTING HOLES ARE 3/16" WITH #10 COUNTERSUNK ON 6" NOMINAL CENTERS

DRAWING NUMBER

150F

DIAMOND SEA GLAZE MANUFACTURING LTD.
26995 GLOUCESTER WAY, LANGLEY B.C.
CANADA V4W 3Y3
TOLL FREE: 1-800-770-0455
PHONE: 604-607-0091
FAX: 604-607-0092

SCALE

NTS

BY

LD



Diamond Sea Glaze

Crystal Clear. Rock Solid.

ITEM NAME

150F

REVISION

0

ITEM DESCRIPTION

YACHT WINDOWS

ALL DRAWINGS AND ANY ASSOCIATED INFORMATION HEREON CONTAIN PROPRIETARY AND/OR CONFIDENTIAL INFORMATION, AND SHALL NOT BE REPRODUCED, DISCLOSED OR SUBMITTED TO ANY THIRD PARTY WITHOUT PRIOR CONSENT FROM DIAMOND SEA GLAZE MANUFACTURING LTD.