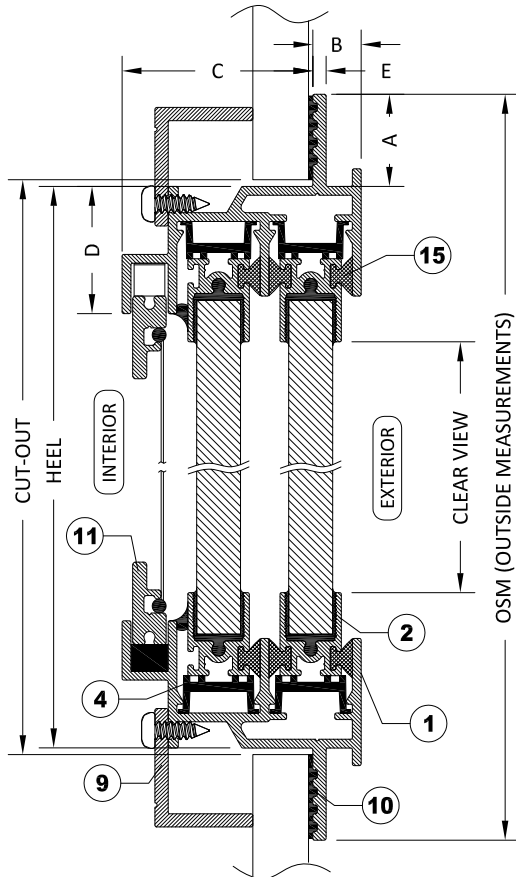


OPTIONAL BOLT-ON INSTALLATION

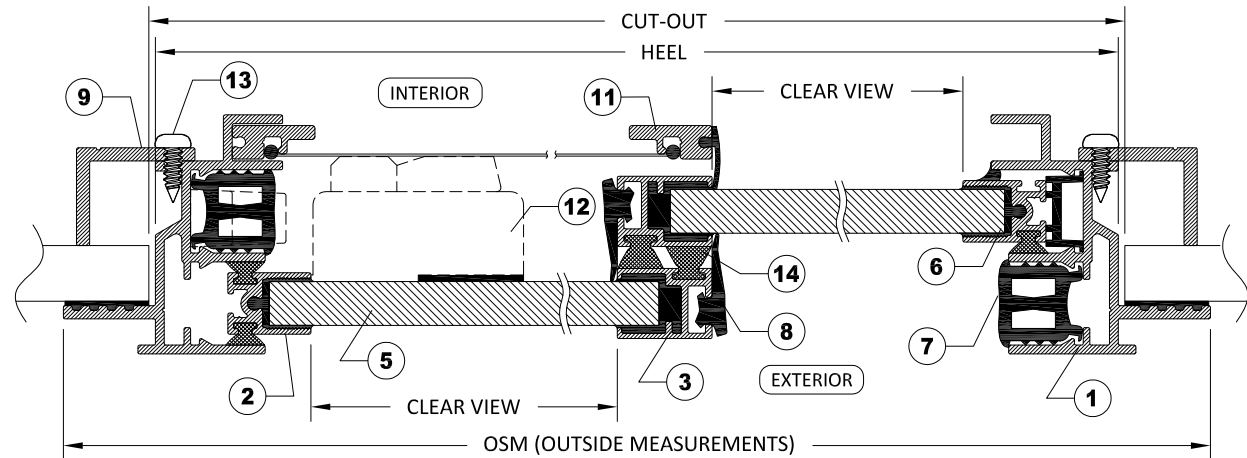
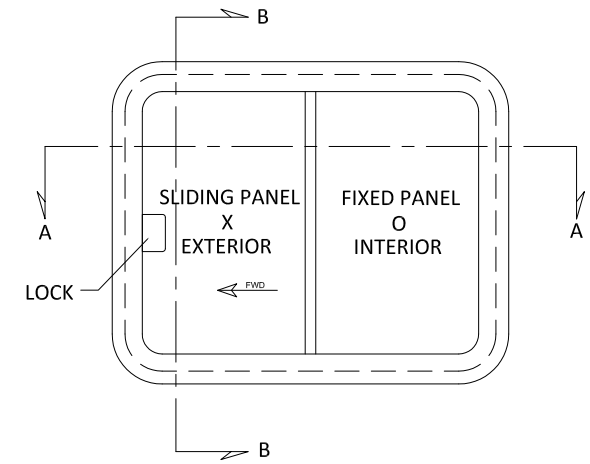


SECTION B-B WITH CLAMP IN INSTALLATION

ITEMS			
ID	DESCRIPTION	MATERIAL	PART NUMBER
1	MOUNTING FRAME	6063 ALUMINUM	MT-EX17698
2	VENT	6063 ALUMINUM	MT-EX782146
3	T-BAR	6063 ALUMINUM	MT-EX780989
4	TRACK	RIDGID PVC	AD-VY1802
5	GLAZING	GLASS 6mm (1/4") TO 10mm (3/8")	
6	GLAZING MATERIAL	URETHANE	
7	PLUG/STOP	FLEXIBLE PVC	AD-VY2170BM
8	T-BAR FLAP 106	FLEXIBLE PVC	AD-VY1801
9	TRIM RING	6063 ALUMINUM	
10	BEDDING COMPOUND	CUSTOMER SUPPLY	
11	SCREEN (OPTIONAL)	6063 ALUMINUM	
12	LOCK	NYLON	HW-CU5539
13	TRIM SCREWS	S/S	
14	T-BAR WEATHER STRIP W/FIN	HAIR	AD - WS187_8335D5
15	WEATHER STRIP W/O FIN	HAIR	AD - WS270_7532

STANDARD DIMENSIONS

ID	DESCRIPTION	DIMENSION
A	FLANGE COVERAGE	21mm (13/16")
B	EXTERIOR PROTRUSION	11mm (7/16")
C	INTERIOR PROTRUSION	44mm (1 11/16")
D	SPIGOT TO CLEAROPEN	29mm (1 1/8")
E	FLANGE THICKNESS	3mm (1/8")



SECTION A-A WITH CLAMP IN INSTALLATION

NOTES:

- GENERAL HEEL TOLERANCE +0/-1/4" OVERALL
- AVAILABLE WITH 3"(76MM) RADIUS OR MITERED CORNERS
- STANDARD MOUNTING HOLES ARE 3/16" WITH #10 COUNTERSUNK ON 6" NOMINAL CENTERS

DRAWING NUMBER

STANDARD

DIAMOND SEA GLAZE MANUFACTURING LTD.  
26995 GLOUCESTER WAY, LANGLEY B.C.  
CANADA V4W 3Y3  
TOLL FREE: 1-800-770-0455  
PHONE: 604-607-0091  
FAX: 604-607-0092



**Diamond Sea Glaze**

*Crystal Clear. Rock Solid.*

SCALE

NTS

BY

LD/RH

ITEM NAME

106-S

REVISION

0

ALL DRAWINGS AND ANY ASSOCIATED INFORMATION HEREON CONTAIN PROPRIETARY AND/OR CONFIDENTIAL INFORMATION, AND SHALL NOT BE REPRODUCED, DISCLOSED OR SUBMITTED TO ANY THIRD PARTY WITHOUT PRIOR CONSENT FROM DIAMOND SEA GLAZE MANUFACTURING LTD.

ITEM DESCRIPTION

COMMERCIAL DUTY WINDOWS