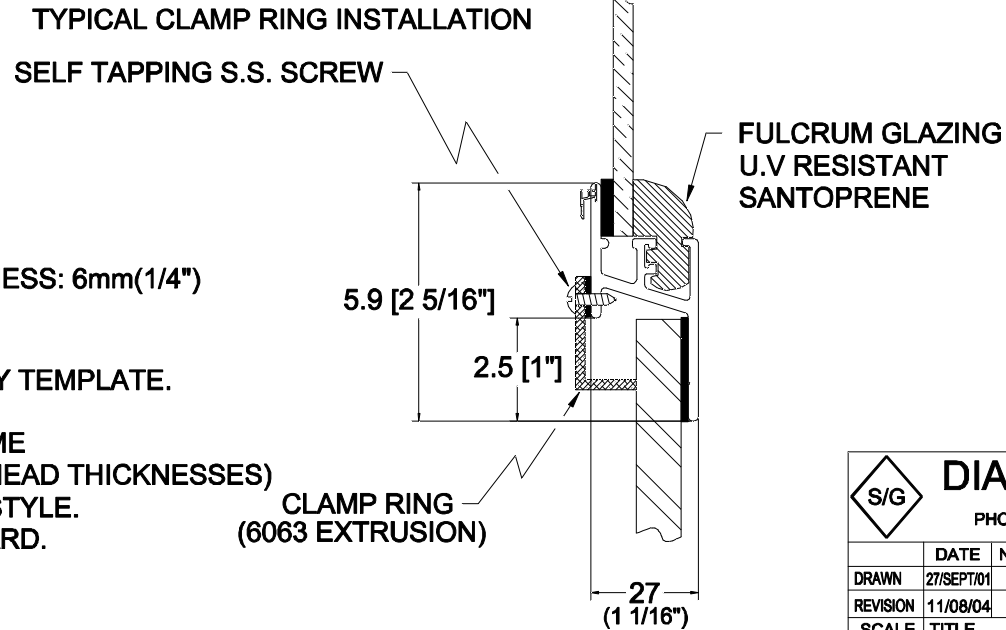
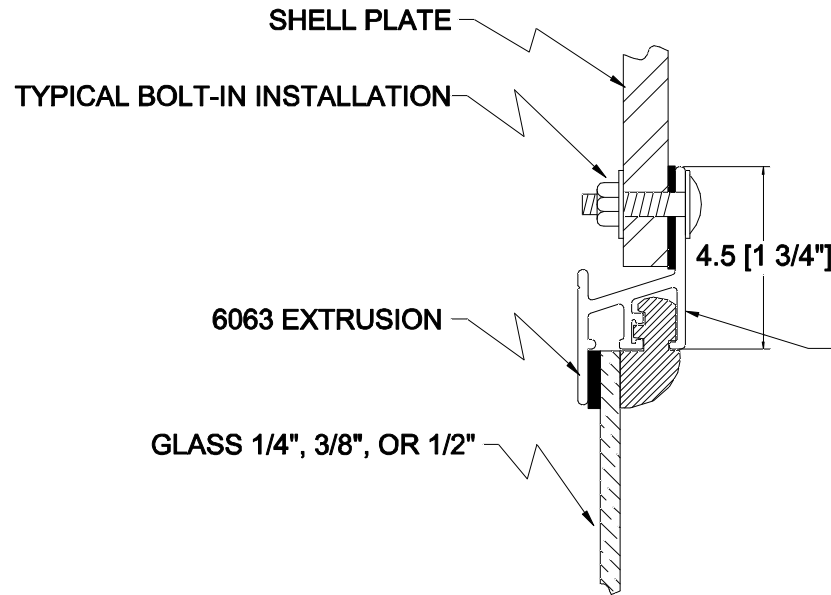
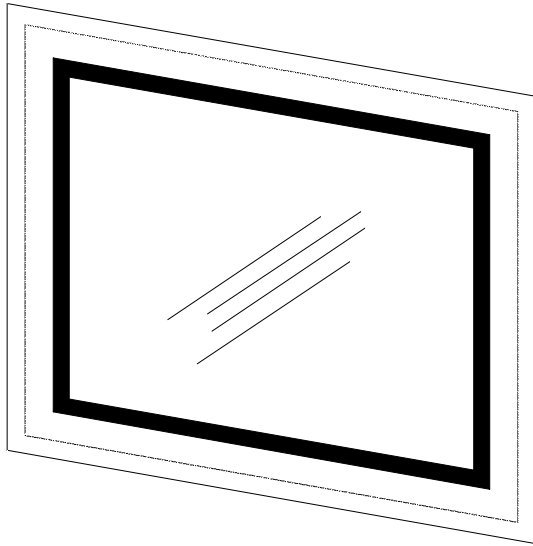


# 100F WINDOW

AVAILABLE IN MITRED CORNERS ONLY.



## GENERAL NOTES

- 1) SPECIFY GLAZING, TYPE, AND TINT. THICKNESS: 6mm(1/4")  
10mm(3/8"), 12mm(1/2")
- 2) MITRED CORNERS ONLY.
- 3) SPECIFY PLATE CUT DIMENSION OR SUPPLY TEMPLATE.  
(HOLE CUT-OUT)
- 4) SPECIFY BOLT-IN OR CLAMP-IN STYLE FRAME  
(CLAMP RINGS AVAILABLE FOR MOST BULKHEAD THICKNESSES)
- 5) SPECIFY WALL THICKNESS FOR CLAMP-IN STYLE.
- 6) FASTENERS FOR BOLT-IN STYLE BY SHIPYARD.
- 7) SPECIFY INSIDE OR OUTSIDE VIEW.
- 8) SPECIFY MILL FINISH OR PAINTED FRAMES.

S/G	<b>DIAMOND/SEA-GLAZE</b>			
	PHONE: (604) 607-0091 FAX: (604) 607-0092			
DRAWN	DATE	NAME	PROJECT	CLIENT
REVISION	11/08/04	JH		
SCALE	TITLE			DWG. NO.
NTS	<b>SERIES 100F</b>			100F.DWG